

ISSUE #	DATE	DESCRIPTION
1	03/22/2022	SITE PLAN SUBMITTAL

NOT FOR CONSTRUCTION

DRAWN BY	JBT
CHECKED BY	SRT
COMMISSION NUMBER	XXXX-XXX
SHEET TITLE	

STORM DRAIN INLET PROTECTION
DATE: DECEMBER 2020
B/C/S UNIFIED STANDARD DETAIL
DETAIL NO: SWPP1-00

STANDARD MANHOLE RING AND COVER
DATE: DECEMBER 2020
B/C/S UNIFIED STANDARD DETAIL
DETAIL NO: D4-00

STANDARD MANHOLE
DATE: DECEMBER 2020
B/C/S UNIFIED STANDARD DETAIL
DETAIL NO: S1-00

BEDDING AND TRENCH FOR REINFORCED CONCRETE PIPE AND BOX CULVERTS
DATE: DECEMBER 2020
B/C/S UNIFIED STANDARD DETAIL
DETAIL NO: D3-03

SINGLE GRATE INLET
DATE: AUG. 2012
B/C/S UNIFIED STANDARD DETAIL
DETAIL NO: D1-01

CITY OF BRYAN STANDARD SEWER SERVICE CONNECTION
DATE: DECEMBER 2020
B/C/S UNIFIED STANDARD DETAIL
DETAIL NO: S6-00

STANDARD MANHOLE TIE-IN
DATE: AUG. 2012
B/C/S UNIFIED STANDARD DETAIL
DETAIL NO: S3-01

BEDDING AND TRENCH FOR DI PIPE & PVC PIPE
DATE: DECEMBER 2020
B/C/S UNIFIED STANDARD DETAIL
DETAIL NO: S1-01

SILT FENCE ASSEMBLY
DATE: AUG. 2012
B/C/S UNIFIED STANDARD DETAIL
DETAIL NO: SWPP1-03

CONSTRUCTION EXIT SLIT CONTROL
DATE: AUG. 2012
B/C/S UNIFIED STANDARD DETAIL
DETAIL NO: SWPP1-02

STANDARD FIRE HYDRANT ASSEMBLY
DATE: DECEMBER 2020
B/C/S UNIFIED STANDARD DETAIL
DETAIL NO: W1-02

GATE VALVE & BOX
DATE: DECEMBER 2020
B/C/S UNIFIED STANDARD DETAIL
DETAIL NO: W1-00

BEDDING AND TRENCH FOR DI PIPE & PVC PIPE WITHIN NON-STRUCTURAL OR NEW PAVED AREAS
DATE: AUG. 2012
B/C/S UNIFIED STANDARD DETAIL
DETAIL NO: W4-02

STRUCTURAL BACKFILL AREA FOR SEWER MAIN
DATE: AUG. 2012
B/C/S UNIFIED STANDARD DETAIL
DETAIL NO: S5-00

STANDARD MANHOLE RING & COVER
DATE: DECEMBER 2020
B/C/S UNIFIED STANDARD DETAIL
DETAIL NO: S4-01

BIM 360/1939-242 Sandy Creek/1393-242 Sandy Creek_TOWNHOME C_A1_2021.rvt
1/27/2022 2:36:37 PM

ISSUE #	DATE	DESCRIPTION
1	03/22/2022	SITE PLAN SUBMITTAL

ISSUE #	DATE	DESCRIPTION
1	03/22/2022	SITE PLAN SUBMITTAL

**NOT FOR
CONSTRUCTION**

DRAWN BY	JBT
CHECKED BY	SRT
COMMISSION NUMBER	XXXX-XXX

GENERAL NOTES:

ALL AREAS WHERE EXISTING VEGETATION AND GRASS COVER HAVE BEEN BARED BY CONSTRUCTION SHALL BE ADEQUATELY BLOCK SODED OR HYDROMULCHED AND WATERED UNTIL GROWTH IS ESTABLISHED. IN AREAS WHERE EXISTING GRASS IS PRESENT, BLOCK SOD WILL BE REQUIRED. BARED AREAS SHALL BE SODED OR SODED WITHIN 14 CALENDAR DAYS OF LAST DISTURBANCE.

APPROVED EROSION CONTROL MEASURES MUST BE INSTALLED DURING THE ENTIRE TIME THAT EARTH HAS BEEN BARED BY CONSTRUCTION AND SHALL REMAIN IN PLACE UNTIL STABLE VEGETATIVE GROWTH IS ESTABLISHED AFTER CONSTRUCTION IS COMPLETE AND THEN REMOVED BY CONTRACTOR.

ALL EROSION CONTROL MEASURES SHOULD BE CLEANED OF SILT AFTER EVERY RAIN.

ALL TRAFFIC SIGNALS AND APPEARANCES, AND ALL PAVEMENT MARKINGS AND MARKERS SHALL BE IN ACCORDANCE WITH TxDOT STANDARDS.

REFER TO SPEC 3117.23.23 (PAVEMENT MARKINGS) FOR ADDITIONAL LOCAL REQUIREMENTS.

TYPICAL COMBINED CURBS & GUTTER SECTION

DATE: FEB. 2021
BICS UNIFIED STANDARD DETAIL: ST1-01
CITY OF BRYAN: Bryan, Texas
CITY OF COLLEGE STATION: College Station, Texas

CITY OF BRYAN WATER SERVICE RECONNECTION

METER SWIVEL NUT OR NIPPLE

VIEW A-A DOUBLE SERVICE

VIEW B-B DOUBLE SERVICE

VIEW C-C DOUBLE SERVICE

DATE: JULY 2016
BICS UNIFIED STANDARD DETAIL: W6-04
CITY OF BRYAN: Bryan, Texas
CITY OF COLLEGE STATION: College Station, Texas

TYPICAL HORIZONTAL THRUST BLOCK

NOTE: USE POLYETHYLENE WRAP OR 200 PSI FOR 24" AND SMALLER INNER DIAMETER PIPE PLUG TO PREVENT CONCRETE FROM STICKING TO PLUG.

THRUST BLOCK NOTES:

- ALL CALCULATIONS ARE BASED ON INTERNAL PRESSURE OF 200 PSI FOR 24" AND SMALLER INNER DIAMETER PIPE.
- CONCRETE FOR BLOCKING SHALL BE 3000 PSI.
- CONCRETE FOR BLOCKING SHALL BE 2000 PSI.
- DIMENSIONS MAY BE VARIED AS REQUIRED BY FIELD WHERE CONCRETE BLOCKING SHALL NOT BE LESS THAN SHOWN HERE.
- WATER MAIN SHALL NOT BE PRESSURIZED UNTIL ALL CONCRETE BLOCKING HAS REACHED 1500 PSI.

BEND SIZE	A	B	C	E	G	VOLUME
90°	6.8"	5.9"	1.5"	1.5"	0.4"	0.4
45°	10.1"	5.5"	2.5"	1.5"	1.2"	1.2
45°	6.8"	2.0"	2.0"	1.5"	0.9"	0.7
22.5°	10.1"	3.5"	1.5"	1.2"	0.2"	0.2
22.5°	6.8"	1.0"	1.5"	1.0"	0.8"	0.1
11.25°	10.1"	2.5"	1.5"	1.2"	1.1"	0.2
11.25°	6.8"	1.0"	1.5"	1.0"	0.4"	0.1
90°	15.1"	1.5"	1.5"	1.2"	0.0"	0.1

DATE: AUG. 2012
BICS UNIFIED STANDARD DETAIL: W2-00
CITY OF BRYAN: Bryan, Texas
CITY OF COLLEGE STATION: College Station, Texas

UTILITY LOCATION MATERIALS

DATE: AUG. 2012
BICS UNIFIED STANDARD DETAIL: W1-03
CITY OF BRYAN: Bryan, Texas
CITY OF COLLEGE STATION: College Station, Texas

NEW WATER SERVICE (SHORT AND LONG SIDE)

DATE: JAN. 2009
BICS UNIFIED STANDARD DETAIL: W2-01
CITY OF BRYAN: Bryan, Texas
CITY OF COLLEGE STATION: College Station, Texas

CROSSWALKS GENERAL NOTES

- CROSSWALK MARKINGS ARE IMPORTANT TRAFFIC CONTROL DEVICES AT CONTROLLED INTERSECTIONS. THESE DEVICES IDENTIFY THE APPROPRIATE LOCATION FOR PEDESTRIANS TO CROSS THE INTERSECTION AS WELL AS INFORMING DRIVERS WHERE PEDESTRIANS MAY BE PRESENT. NOT ALL LOCATIONS NEED THE CROSSWALK MARKINGS. HOWEVER, TYPICALLY COLLECTOR AND ARTERIAL STREETS DO, AS STATED IN THE TMDOT, AN ENGINEERING STUDY SHOULD BE PERFORMED BEFORE CROSSWALKS ARE INSTALLED AT LOCATIONS OTHER THAN CONTROLLED INTERSECTIONS.
- THE CITY OF BRYAN'S PREFERENCE FOR MARKING CROSSWALKS IS THE LONGITUDINAL (OR "LADDER") STYLE. THE CITY OF COLLEGE STATION'S PREFERENCE IS THE TYPICAL "TRANSVERSE" STYLE. HOWEVER, IN THE NORTHEAST AREA, ADJACENT TO SCHOOL OR SCHOOL ZONES, AND OTHER HIGH PEDESTRIAN CROSSINGS, THE LONGITUDINAL (OR "LADDER") STYLE IS PREFERRED. DEVIATION FROM THESE PREFERENCES WILL BE ALLOWED ONLY WITH THE APPROVAL OF THE CITY ENGINEER.
- THE LONGITUDINAL "LADDER" STYLE MARKING SHALL BE 20" WIDE AND FEET IN LENGTH SPACED 60-INCHES APART. CONSIST OF 12-INCH WIDE WHITE LONGITUDINAL LINES SPACED 6-INCHES APART. LONGITUDINALLY, THESE MARKINGS SHALL EXTEND 5 FEET. THE TRANSVERSE MARKINGS SHALL CONSIST OF TWO 12-INCH WIDE LINES SEPARATED BY A FEET OF UNMARKED PAVEMENT. ALL CROSSWALK PAVEMENT MARKINGS SHALL ALWAYS MEET TxDOT'S SPECIFICATION FOR TYPICAL MARKINGS UNLESS OTHERWISE BE THERMOPLASTIC. UNLESS A DIFFERENT MATERIAL IS APPROVED BY THE CITY ENGINEER.
- ADDITIONAL INFORMATION ABOUT CROSSWALK MARKINGS CAN BE FOUND IN THE TMDOT.
- CROSSWALKS WITH BRICK PAVERS, STAMPED ASPHALT, STAMPED CONCRETE, ETC. SHALL ALSO REQUIRE RETROREFLECTIVE THERMOPLASTIC TRANSVERSE STRIPING.

DATE: DECEMBER 2020
BICS UNIFIED STANDARD DETAIL: SW2-GN01
CITY OF BRYAN: Bryan, Texas
CITY OF COLLEGE STATION: College Station, Texas

DETECTABLE WARNINGS GENERAL NOTES

- CURB RAMPS MUST CONTAIN A DETECTABLE WARNING SURFACE THAT CONSISTS OF RAISED TRUNCATED DOMES COMPLYING WITH SECTION 429 OF THE TEXAS ACCESSIBILITY STANDARDS (TAS). THE SURFACE MUST CONTRAST VISUALLY WITH ADJOINING SURFACES, INCLUDING SIDE FLARES. FURNISH DARK BROWN OR DARK RED DETECTABLE WARNING SURFACE ADJACENT TO UNCOLORED CONCRETE, UNLESS SPECIFIED ELSEWHERE IN THE PLANS.
- DETECTABLE WARNING SURFACES MUST BE SLIP RESISTANT AND NOT ALLOW WATER TO ACCUMULATE.
- ALIGN TRUNCATED DOMES IN THE DIRECTION OF PEDESTRIAN TRAVEL WHEN ENTERING THE STREET.
- SHADED AREAS ON SHEETS 3 AND 4 INDICATE THE APPROXIMATE LOCATION FOR THE DETECTABLE WARNING SURFACE FOR EACH CURB RAMP TYPE.
- DETECTABLE WARNING SURFACES SHALL BE A MINIMUM OF 6" AND A MAXIMUM OF 10" FROM THE CORNER BARRIS.
- DETECTABLE WARNING SURFACES SHALL BE LOCATED SO THAT THE NEAREST THE CURB LINE IS A MINIMUM OF 6" AND A MAXIMUM OF 10" FROM THE EXTENSION OF THE FACE OF CURB. DETECTABLE WARNING SURFACES MAY BE CURVED ALONG THE CORNER RADII.
- ACCEPTABLE PAVEMENT MATERIAL SHALL BE CLAY, VITRIFIED POLYMER COMPOSITE, PRECAST POLYMER CONCRETE, AND CONCRETE.

DATE: DECEMBER 2020
BICS UNIFIED STANDARD DETAIL: SW2-GN00
CITY OF BRYAN: Bryan, Texas
CITY OF COLLEGE STATION: College Station, Texas

TYPICAL PLACEMENT OF DETECTABLE WARNING SURFACE ON SLOPING RAMP RUN

DATE: AUG. 2012
BICS UNIFIED STANDARD DETAIL: SW2-01
CITY OF BRYAN: Bryan, Texas
CITY OF COLLEGE STATION: College Station, Texas

CONCRETE PAVEMENT JOINT LAYOUT

DATE: FEB. 2018
BICS UNIFIED STANDARD DETAIL: ST3-00
CITY OF BRYAN: Bryan, Texas
CITY OF COLLEGE STATION: College Station, Texas

NEW WATER SERVICE (SHORT AND LONG SIDE)

DATE: JAN. 2009
BICS UNIFIED STANDARD DETAIL: W2-01
CITY OF BRYAN: Bryan, Texas
CITY OF COLLEGE STATION: College Station, Texas

TYPICAL RIBBON CURB

DATE: FEB. 2021
BICS UNIFIED STANDARD DETAIL: ST1-03
CITY OF BRYAN: Bryan, Texas
CITY OF COLLEGE STATION: College Station, Texas

5/8" SIDEWALK AMBULATORY RAMP AT STREET INTERSECTION

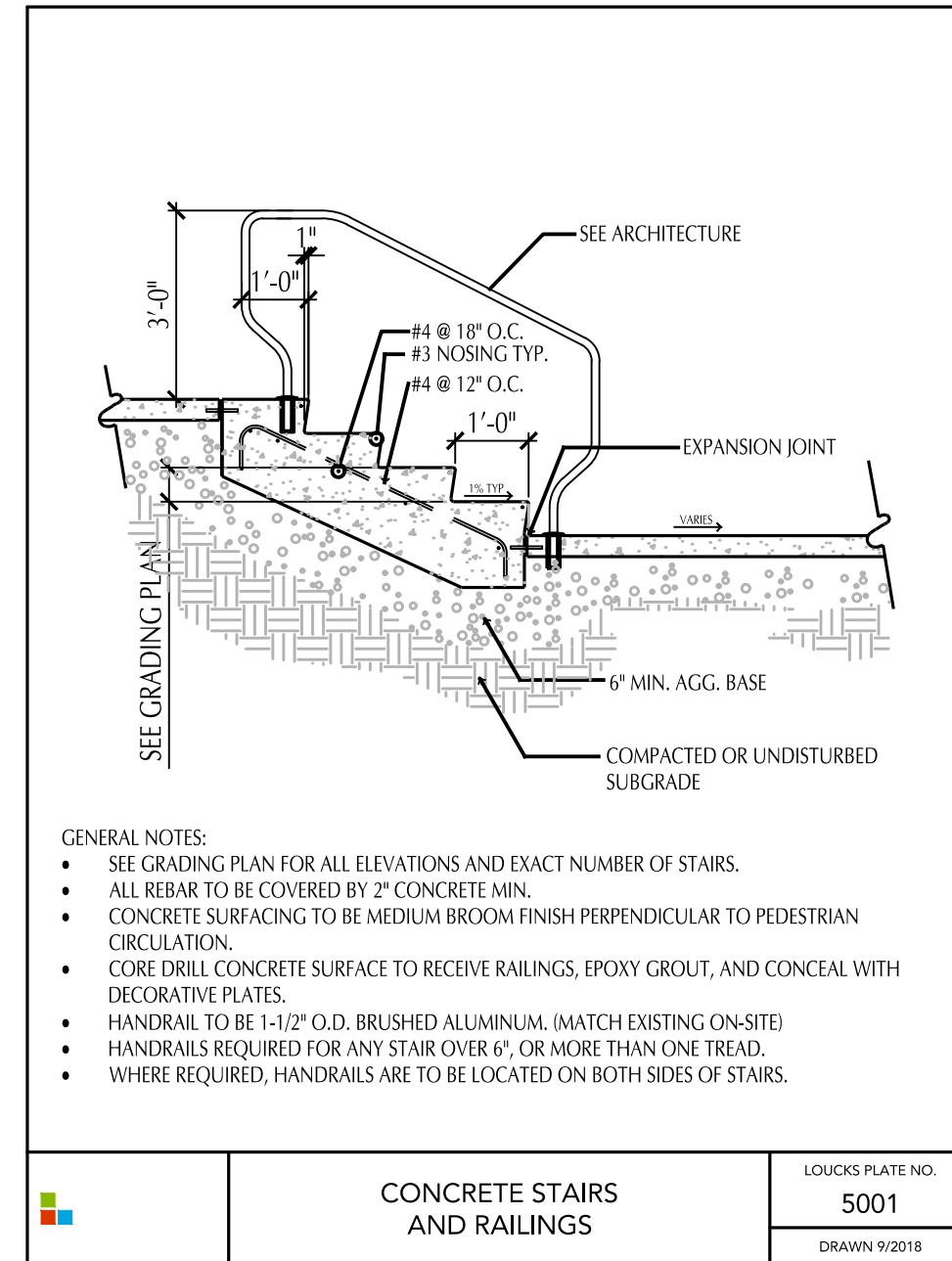
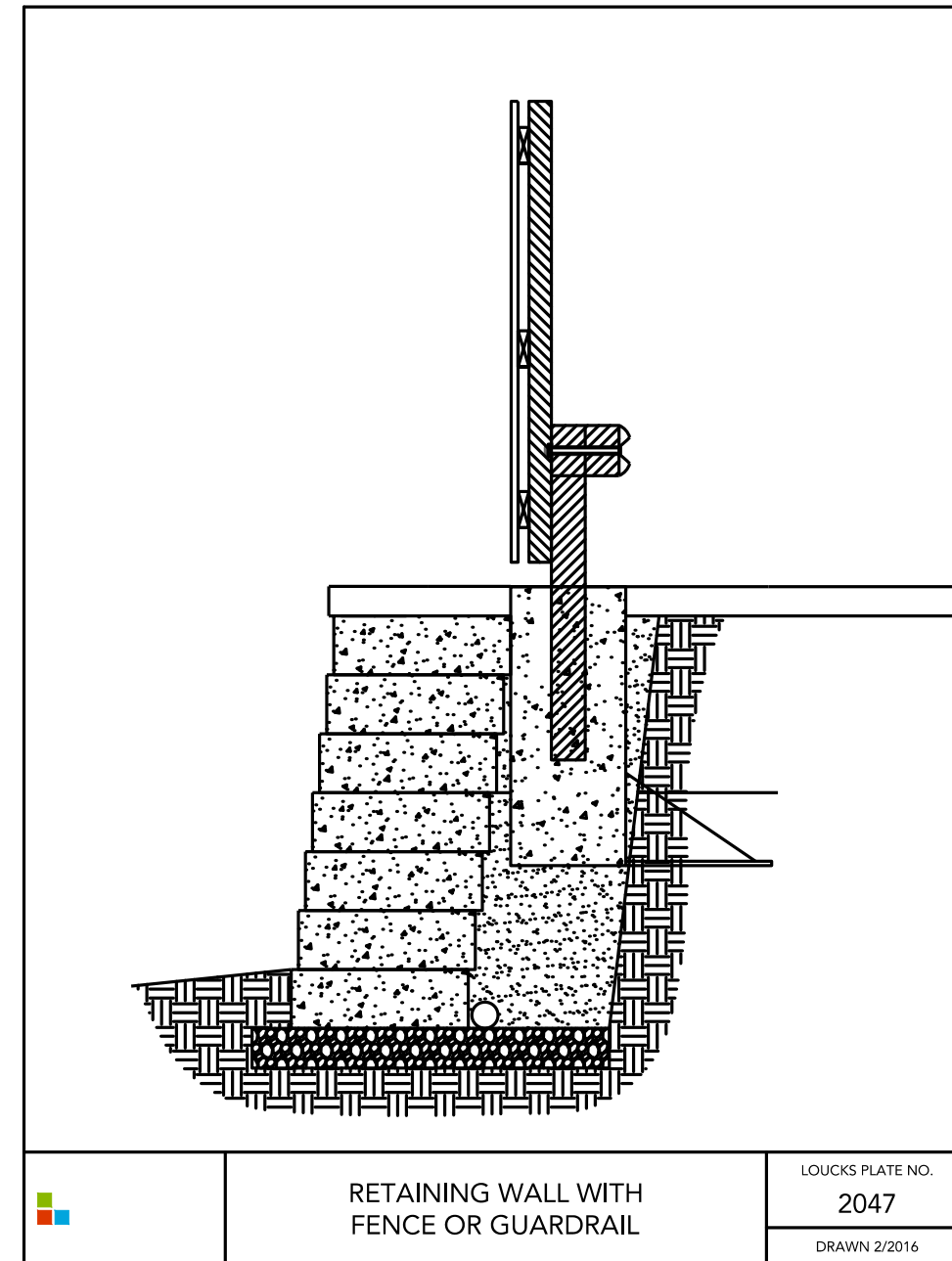
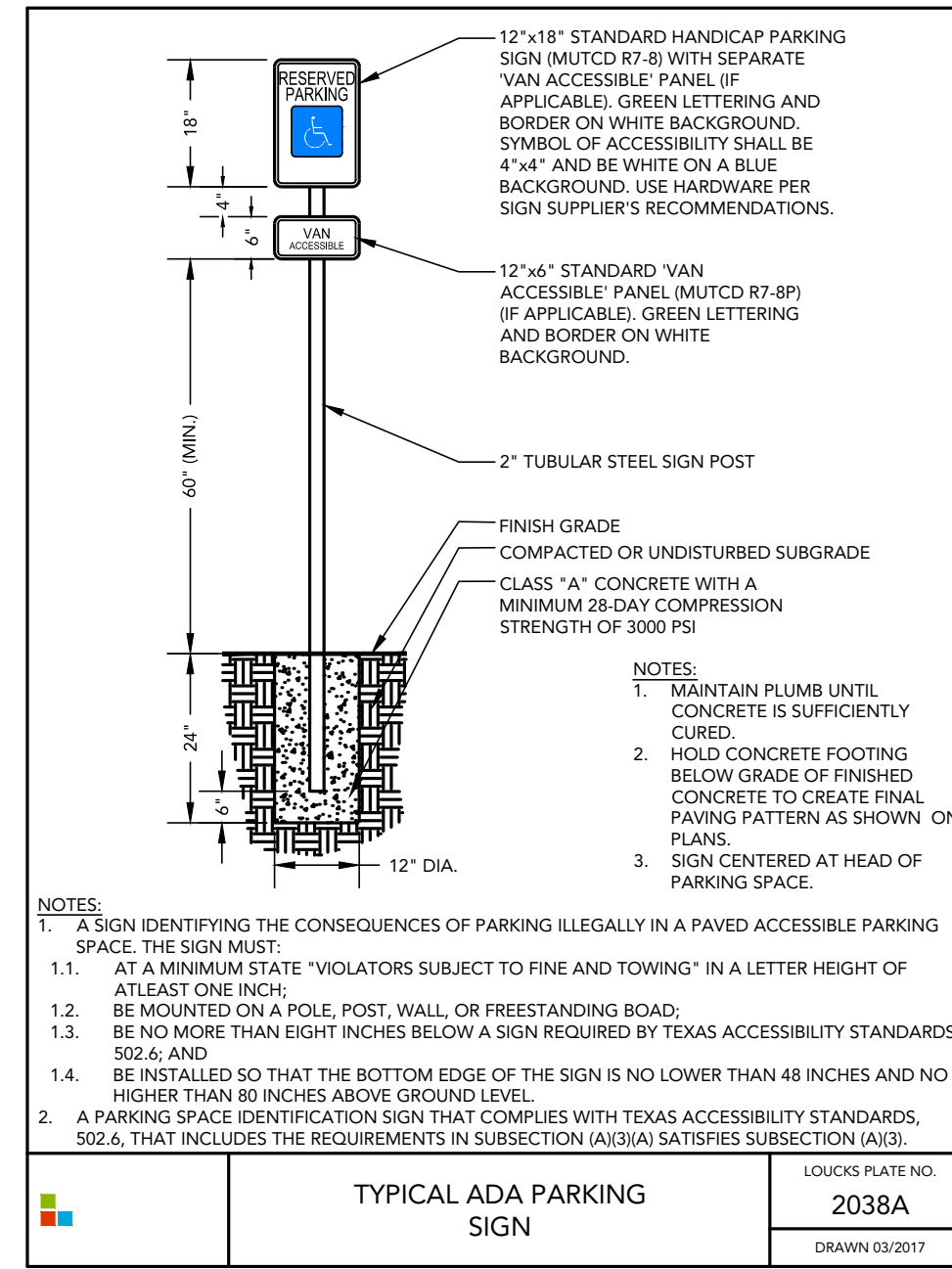
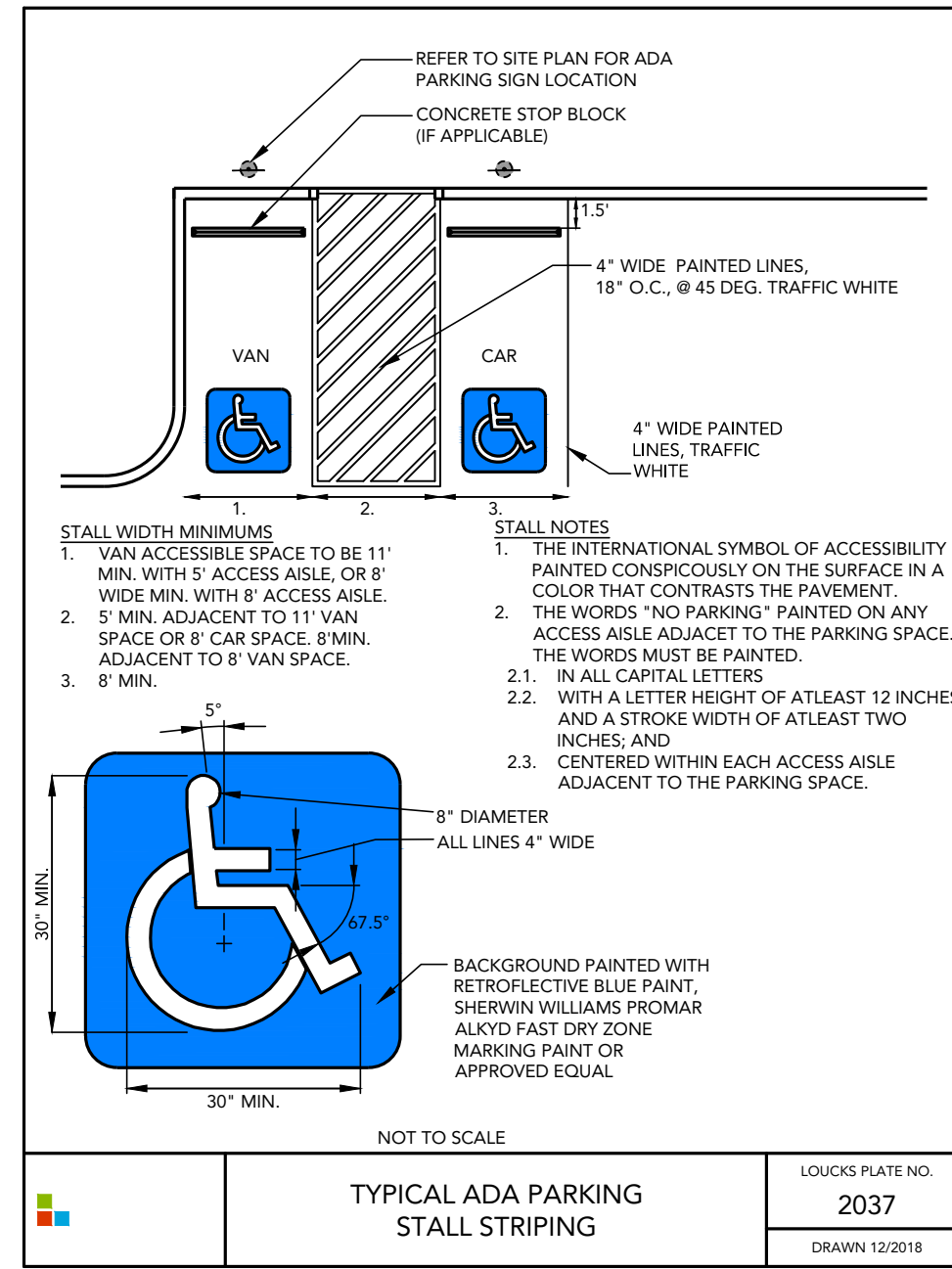
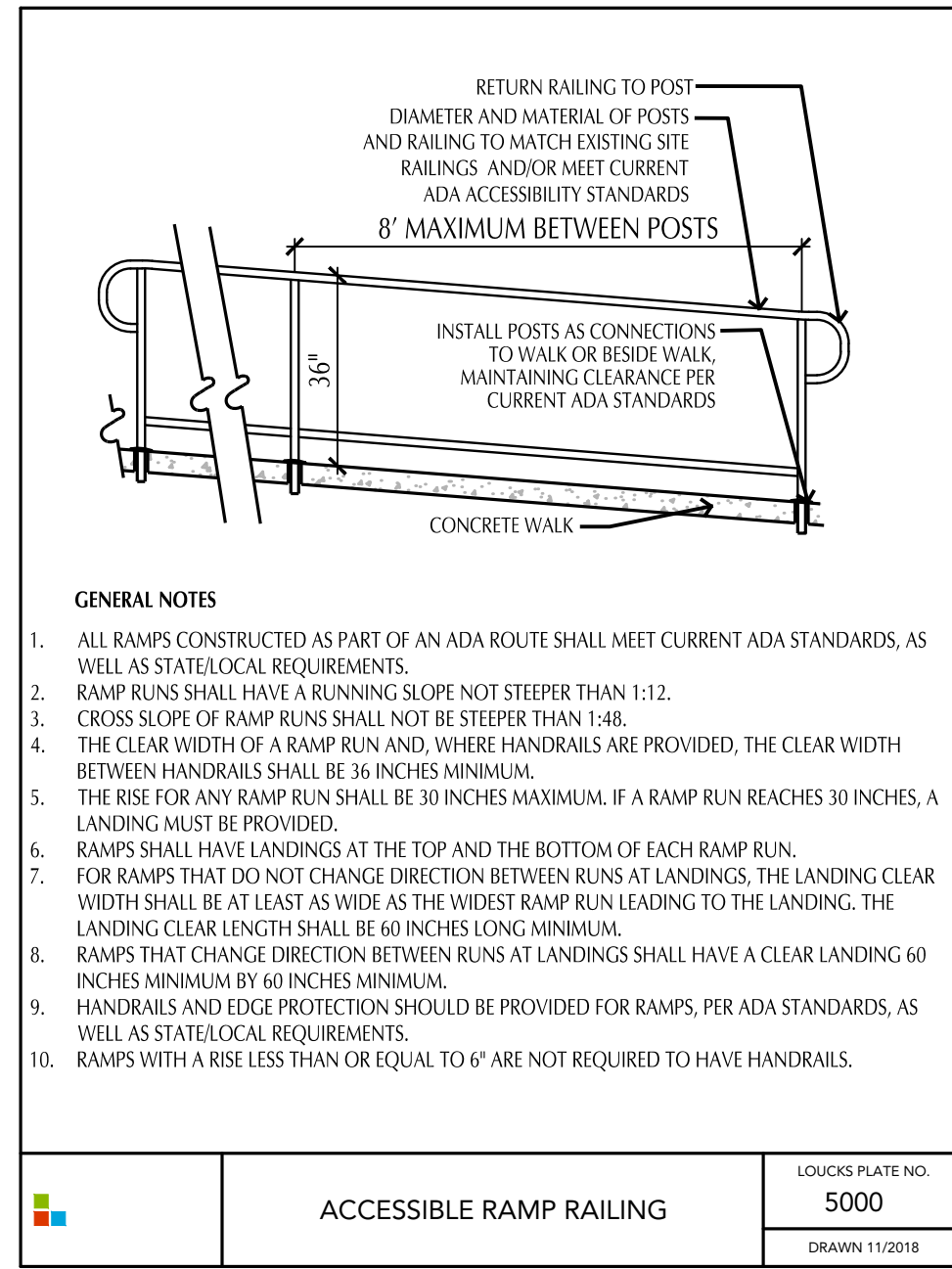
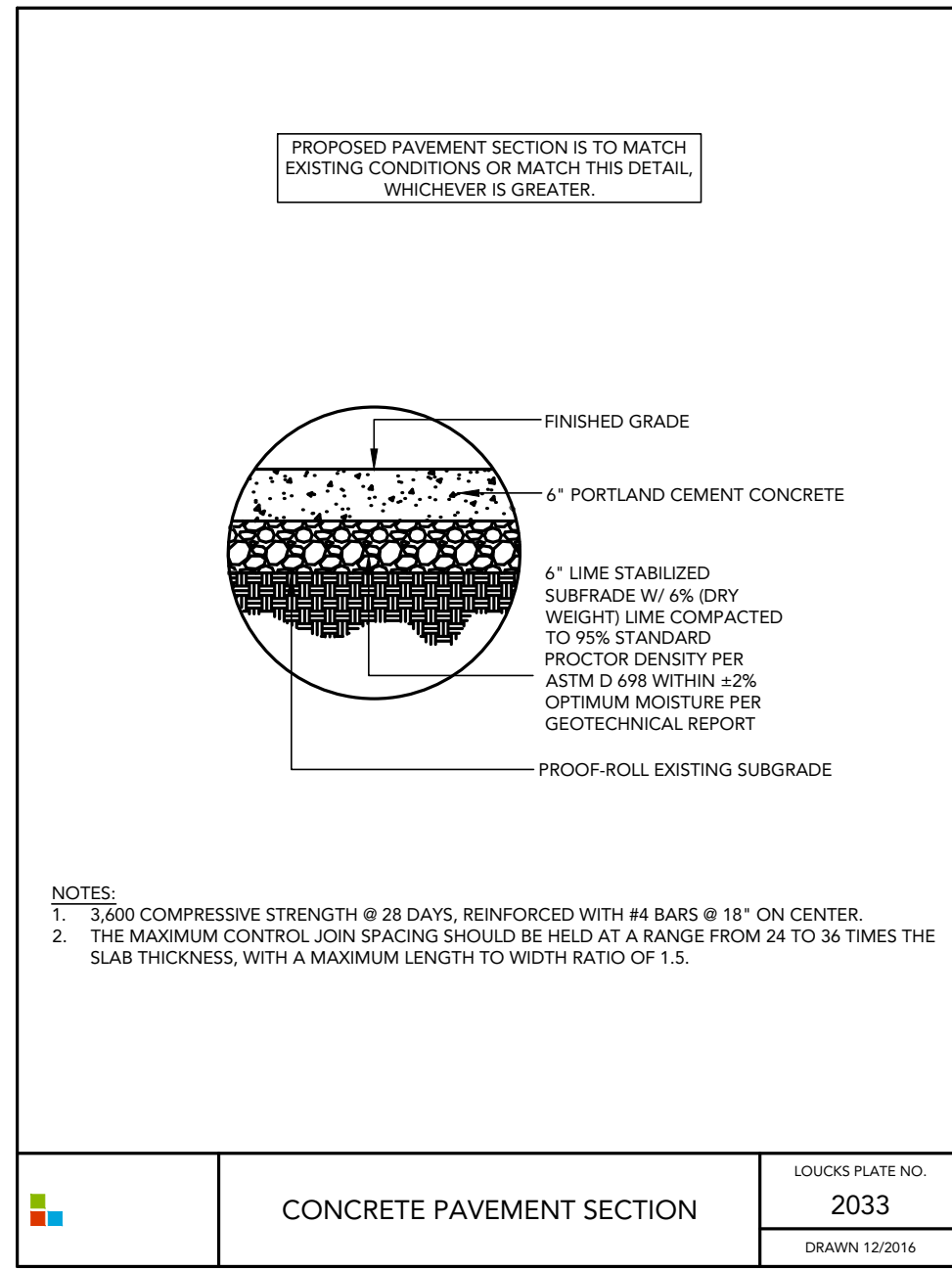
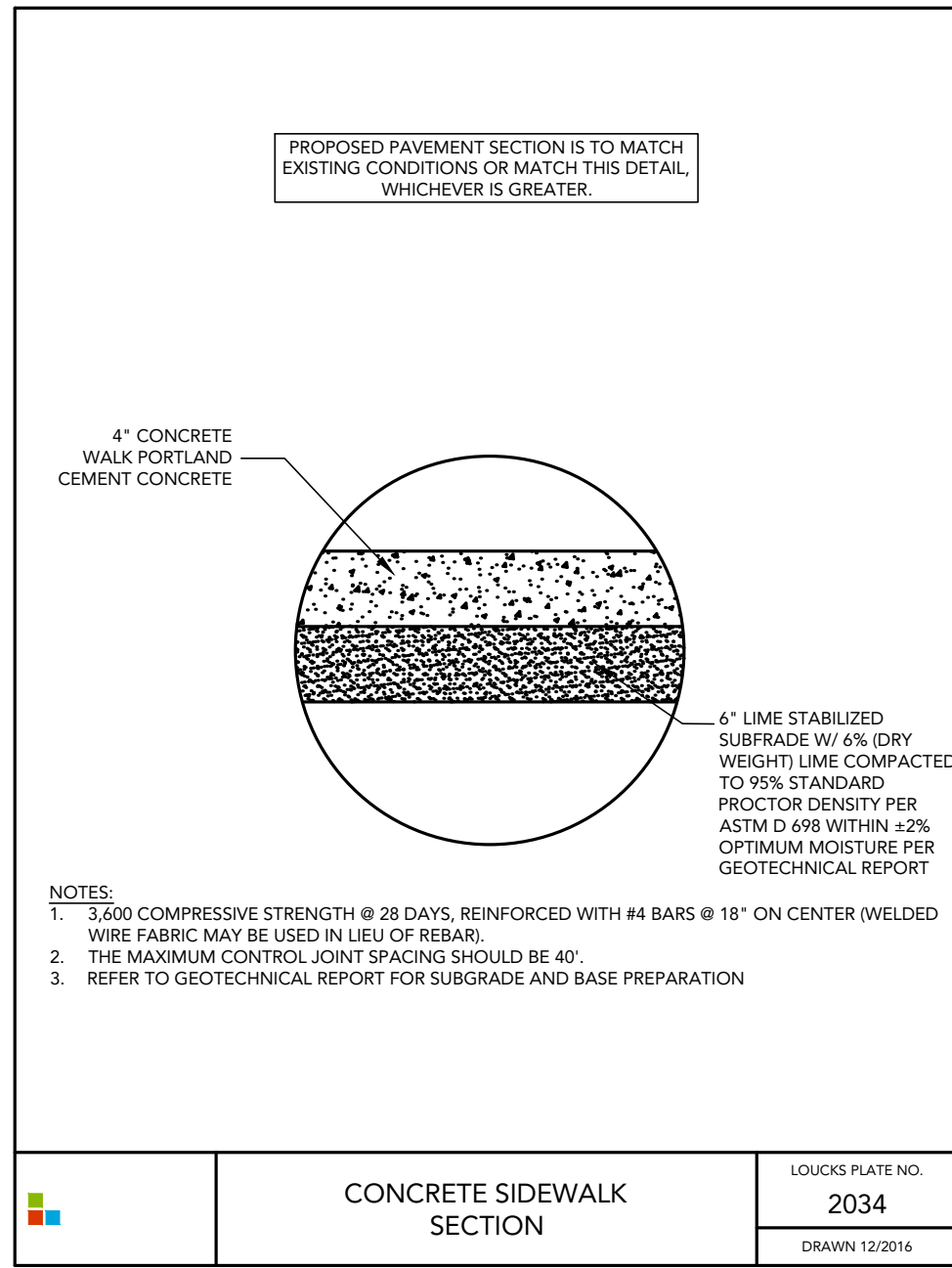
DATE: DECEMBER 2020
BICS UNIFIED STANDARD DETAIL: SW3-00
CITY OF BRYAN: Bryan, Texas
CITY OF COLLEGE STATION: College Station, Texas

PEDESTRIAN FACILITIES GENERAL NOTES

- ALL SLOPES ARE MAXIMUM ALLOWABLE. THE LEAST PERMISSIBLE SLOPE SHALL BE USED. ADJUST CURB RAMP LENGTH OR GRADE OF APPROACH SIDEWALK TO MEET PERMISSIBLE SLOPE IN ANY DIRECTION.
- LANDINGS SHALL BE AT LEAST 2' X 2' MINIMUM WITH A MAXIMUM 2% SLOPE IN ANY DIRECTION.
- MINIMUM CLEARANCE AT THE BOTTOM OF CURB RAMPS SHALL BE 7' 6" MINIMUM. THE ADJACENT SURFACE IS THE CROSSWALK AND WHOLLY OUTSIDE THE PARALLEL APPROACH SIDEWALK.
- MAXIMUM ALLOWABLE CROSS SLOPE ON SIDEWALK AND CURB RAMP IS 2%.
- CURB RAMPS WITH RETIENED CURBS MAY BE USED ONLY WHERE PEDESTRIANS WOULD NOT NORMALLY WALK ACROSS THE RAMP. EITHER BECAUSE THE ADJACENT SURFACE IS THE CROSSWALK AND WHOLLY OUTSIDE THE PARALLEL APPROACH SIDEWALK OR BECAUSE THE SIDE APPROACH IS SUBSTANTIALLY OBSTRUCTED OTHERWISE, PROVIDE A LANDING.
- ADDITIONAL INFORMATION ON CURB RAMP LOCATION, DESIGN, LIGHT REFLECTIVE VALUE, AND TEXTURE MAY BE FOUND IN THE CURRENT EDITION OF THE TEXAS ACCESSIBILITY STANDARDS (TAS) AND IS FAC. 60.02.
- TO SERVE AS A PEDESTRIAN BYPASS AREA, THE MEDIAN SHOULD BE A MINIMUM OF 5' WIDE. MEDIANS SHOULD BE DESIGNED TO PROVIDE ACCESSIBLE PASSAGE OVER OR THROUGH THEM.
- KNOWLEDGE OF DIMENSIONS, CROSSWALK MARKINGS AND STOP BAR LOCATIONS SHALL BE AS SHOWN ELSEWHERE IN THE PLANS. ALL TRAFFIC SIGNALS AND APPEARANCES, AND ALL PAVEMENT MARKINGS AND MARKERS SHALL BE IN ACCORDANCE WITH TxDOT STANDARDS.
- EXISTING FEATURES THAT COMPLY WITH TAS MAY REMAIN IN PLACE UNLESS OTHERWISE SHOWN ON THE PLANS.
- HANDRAILS ARE NOT REQUIRED ON CURB RAMPS. PROVIDE CURB RAMPS WHEREVER AN ACCESSIBLE ROUTE CROSSES (PENETRATES) A CURB.
- SEPARATE CURB RAMP AND LANDINGS FROM ADJACENT SIDEWALK AND ANY OTHER ELEMENTS WITH FURNISHED OR BEADED JOINT OF 3/4" UNLESS OTHERWISE DIRECTED BY THE ENGINEER.
- PROVIDE A SMOOTH TRANSITION WHERE THE CURB RAMPS CONNECT TO THE STREET.
- FLARE SLOPE SHALL NOT EXCEED 10% MEASURED ALONG CURB LINE.

DATE: DECEMBER 2020
BICS UNIFIED STANDARD DETAIL: SW2-GN02
CITY OF BRYAN: Bryan, Texas
CITY OF COLLEGE STATION: College Station, Texas

BIM 360//1393-242 Sandy Creek/1393-242 Sandy Creek_TOWNHOME C_A_2021.rvt
1/27/2022 2:36:37 PM



ISSUE #	DATE	DESCRIPTION
1	03/22/2022	SITE PLAN SUBMITTAL

NOT FOR CONSTRUCTION

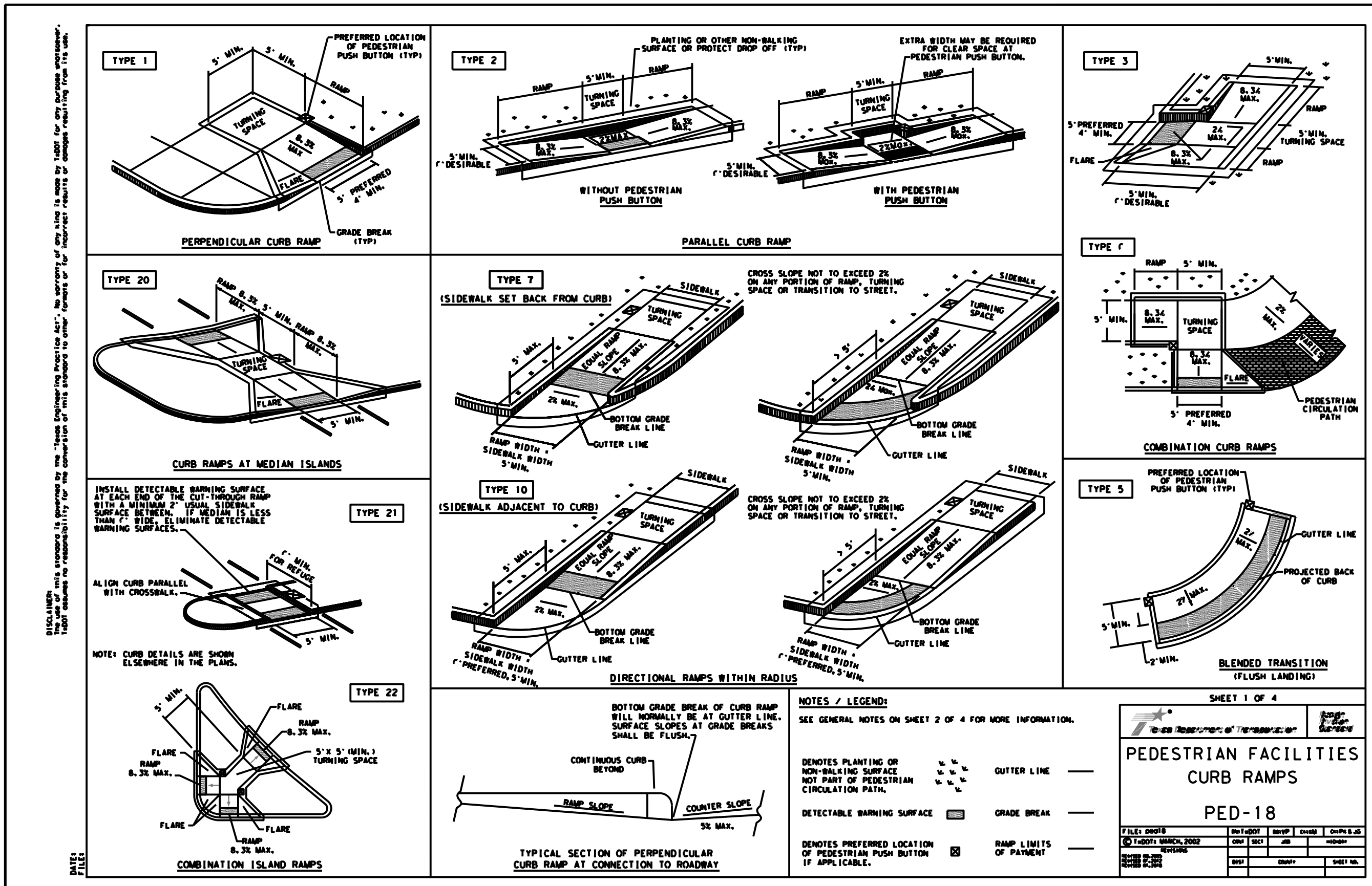
DRAWN BY	JBT
CHECKED BY	SRT
COMMISSION NUMBER	XXXX-XXX

SHEET TITLE

ISSUE #	DATE	DESCRIPTION
1	03/22/2022	SITE PLAN SUBMITTAL

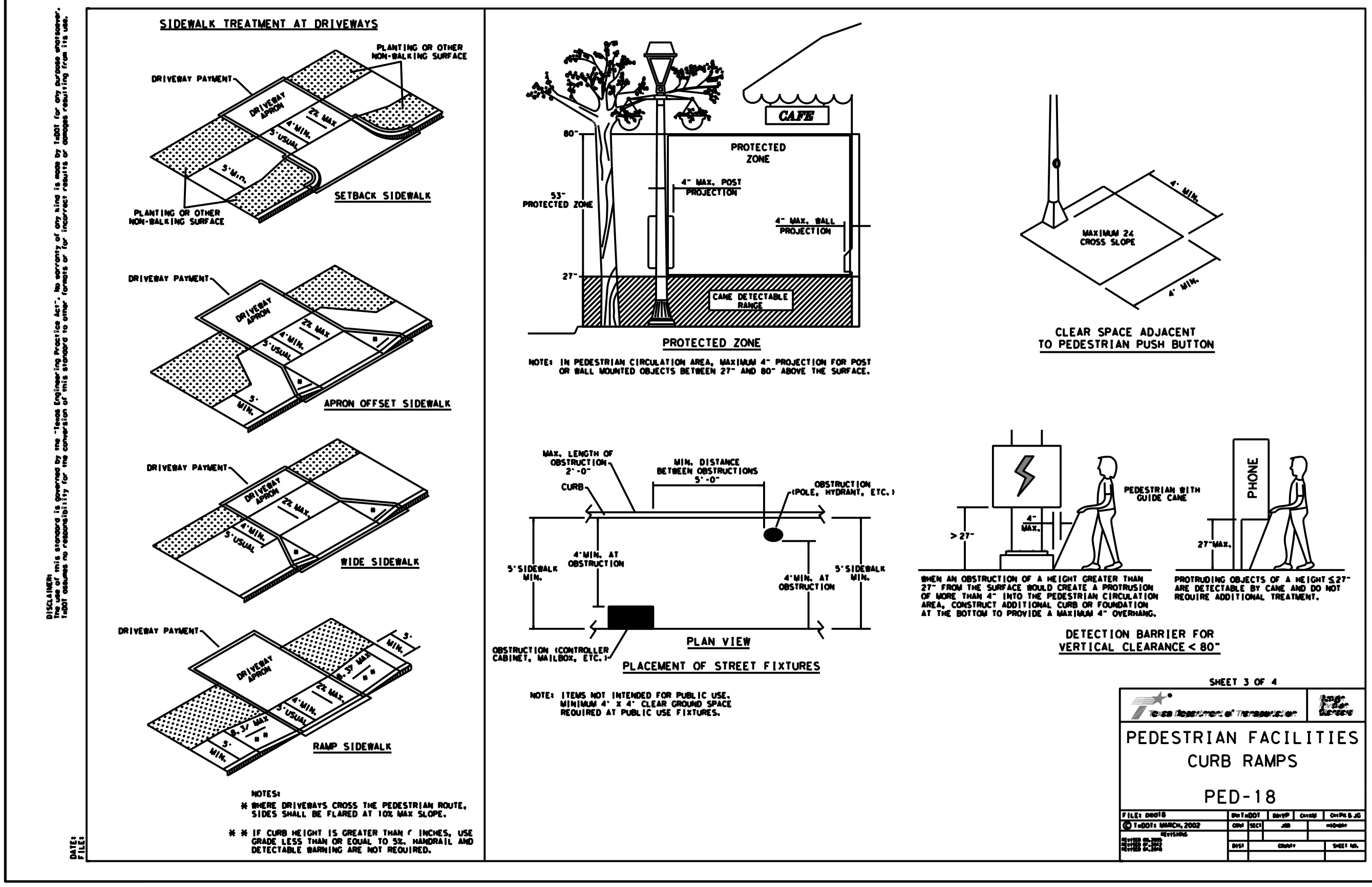
NOT FOR CONSTRUCTION

DRAWN BY	JBT
CHECKED BY	SRT
COMMISSION NUMBER	XXXX-XXX
SHEET TITLE	



DISCLAIMER: THESE DETAILS ARE PROVIDED AS A GUIDE ONLY. THE USER SHALL BE RESPONSIBLE FOR VERIFYING THE APPLICABILITY OF THESE DETAILS TO THE PROJECT AND FOR OBTAINING ALL NECESSARY PERMITS AND APPROVALS FROM THE LOCAL AUTHORITY.

DISCLAIMER: THESE DETAILS ARE PROVIDED AS A GUIDE ONLY. THE USER SHALL BE RESPONSIBLE FOR VERIFYING THE APPLICABILITY OF THESE DETAILS TO THE PROJECT AND FOR OBTAINING ALL NECESSARY PERMITS AND APPROVALS FROM THE LOCAL AUTHORITY.



DISCLAIMER: THESE DETAILS ARE PROVIDED AS A GUIDE ONLY. THE USER SHALL BE RESPONSIBLE FOR VERIFYING THE APPLICABILITY OF THESE DETAILS TO THE PROJECT AND FOR OBTAINING ALL NECESSARY PERMITS AND APPROVALS FROM THE LOCAL AUTHORITY.

DISCLAIMER: THESE DETAILS ARE PROVIDED AS A GUIDE ONLY. THE USER SHALL BE RESPONSIBLE FOR VERIFYING THE APPLICABILITY OF THESE DETAILS TO THE PROJECT AND FOR OBTAINING ALL NECESSARY PERMITS AND APPROVALS FROM THE LOCAL AUTHORITY.

DISCLAIMER: THESE DETAILS ARE PROVIDED AS A GUIDE ONLY. THE USER SHALL BE RESPONSIBLE FOR VERIFYING THE APPLICABILITY OF THESE DETAILS TO THE PROJECT AND FOR OBTAINING ALL NECESSARY PERMITS AND APPROVALS FROM THE LOCAL AUTHORITY.